

MS H-Power Column Type Intensive Care Unit



Our company manufactures user-friendly intensive care units which can be used by hospitals for years without any problems, conforming to the standards and not putting human health at risk with its knowledge and experience.

MedSistem MS H-Power Column Type Intensive Care Unit is designed to be used easily and practically by health personnel and has developable features. Cleaning and maintenance is easy.

Two models (İzmir-Konya) as double duct or single duct are produced as a standard in accordance with the general architectural structure of your hospital and tailor-made can be produced in the direction of special requests and expectations.

MedSystem MS H-Power Column Type Intensive Care Unit allows the light to circulate within the intensive care unit thanks to its H-shaped design, and the visibility within the intensive care unit is much less restrictive than other complex closed-column units. According to the wall-type units, the service provides access to the patient from a corner of the bed and also provides easy intervention from the head to the patient.

MS H-Power is one of the most ideal solutions where there is no suitable installation wall and the movement area is limited.

MedSistem MS H-Power Column Type Intensive Care Unit is equipped with accessories as standard due to its unit structure. The MedSistem MS H-Power unit may have shelves and infusion pump hangers as an optional. MedSistem MS H-Power Column Intensive Care Unit can be tailor-made with customized plans according to your needs and expectations. Design options are available that allow the design of electric and gas services as desired.

MedSistem MS H-Power Column Intensive Care Unit, in combination with high quality materials, fine workmanship, is manufactured in accordance with the requirements of International Standard ISO 13485 Medical and Medical Devices Standard and EN 11197 European Standard. While Patient Units are manufactured, they are subjected to electrical tests according to EN 60601-1 Standard and maximum security is ensured.

MedSistem MS H-Power Column Type Intensive Care Unit is available in a variety of colors to suit your architectural needs. The units can be painted in any color with the international color code RAL codes.

• COLOUR OPTIONS

The MS Col-Power Column Type Intensive Care Unit can be manufactured in any color according to RAL codes, an international color code. The color and design of the unit can be designed in accordance with the general architectural structure of your hospital and offer the options and changes you wish.

• GAS OUTLETS

MS H-POWER Intensive Care Unit Gas outlets conforming to BS, DIN, and AFNOR standards can be used in accordance with customer requirements. This option offers a wide range of options with the option of adding different sockets.

• ELECTRICAL SOCKET

MS H-POWER Intensive Care Unit is able to connect all kinds of equipment to the electrical outlets.

Electrical sockets can be designed and customized according to your usage and requests in different standards, units and shapes.

The electrical part of the unit and the gas part are separated completely from each other. Electricity groups are tested according to EN ISO 60601-1 standard.

• ACCESSORIES

On MS H-POWER Intensive Care Unit, the following equipment can be added as required:

- ⇒ Monitor stands
- ⇒ Additional accessory rail
- ⇒ Infusion pump holder rod
- ⇒ Serum hanging bar (4 or 6 hooks)
- ⇒ Exam lamp
- ⇒ Additional night lighting

• QUALITY

Thanks to the ISO 9001 and ISO 13485 Quality Systems that MedSistem applies, we aim to provide a better service to our valued customers in every way and we are making product development studies accordingly.



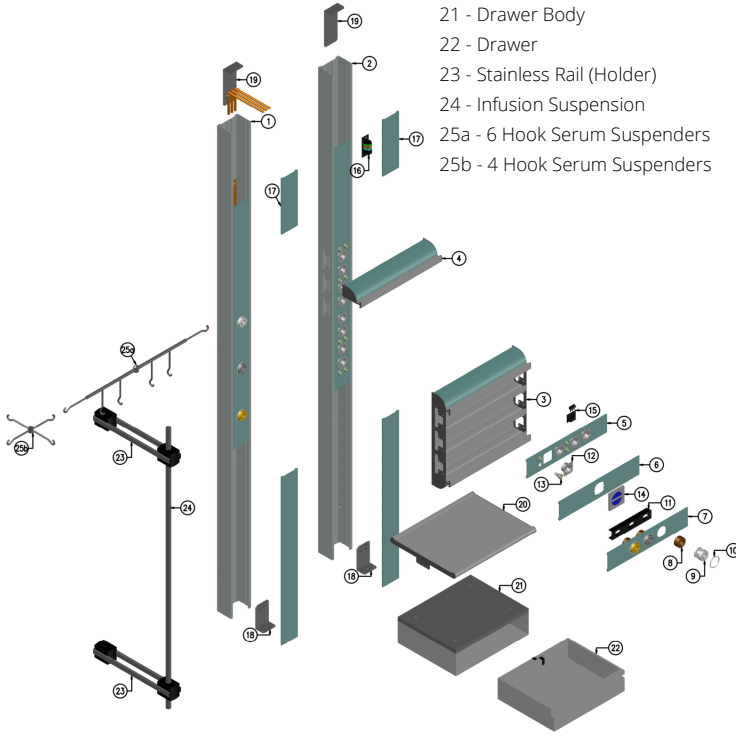
CE1984

MS H-POWER COLUMN TYPE INTENSIVE CARE UNIT

Characteristics

- | | |
|------------------------------------|---------------------------------|
| 01 - Gas Canal | 11 - Gas Socket Upgrade Cadaver |
| 02 - Electric Duct | 12 - Electrical socket |
| 03 - Modular Module | 13 - Grounding Node |
| 04 - BS Ray | 14 - Nurse Call Button |
| 05 - Electric Cover | 15 - Socket Kelemens |
| 06 - DATA, Nurse Call System Cover | 16 - Electrical Input Terminal |
| 07 - Gas Cover | 17 - Body Cover |
| 08 - Gas Outlet Body | 18 - Base Link Foot |
| 09 - Gas Outlet Top Piece | 19 - Ceiling Link Foot |
| 10 - Gas Plug Work Ring | 20 - Tray |

- | |
|-------------------------------|
| 21 - Drawer Body |
| 22 - Drawer |
| 23 - Stainless Rail (Holder) |
| 24 - Infusion Suspension |
| 25a - 6 Hook Serum Suspenders |
| 25b - 4 Hook Serum Suspenders |



MEDICAL GAS OUTLETS

According to your requests BS, DIN, AFNOR and other international standards Medical Gas Outlets can be used on the unit. Installation of your gas outlets, which you supply in the direction of your demands, can also be done in the unit.



ELECTRIC SOCKETS

According to your requests and requests of national or international standards, various type of electric sockets can be used in MS Bedhead Units. In Europe and Turkey, Type C (CEE 7/16) standard and other international standards such as Type B (Nema 5-15), Type A (Nema 1-15), Type E (CEE 7/4), Type F (CE 7/4), Type G (BS 1363) can also be used. The installation of the electrical outlets that you supply in the direction of your demands can also be fixed to the MS Bedhead Units.



COMPLIANCE WITH STANDARDS

MedSystem Pendant Units are manufactured according to international quality and safety standards. All Bedhead Units are already in compliance with the new European Safety standard EN ISO 11197. MedSystem products are 'CE' certified under the Medical Device Directive 93/42/EEC. Since the Bedhead Units contain only a gas outlet in the sense of critical material, the CE mark of the gas outlet manufacturer is valid.

MEDSYSTEM QUALITY CERTIFICATE



Friendly, Flexible and Functional Solutions by MedSystem

MedSystem Medical and Technical Equipment Gas Systems Industry and Trade Limited Company.

Web : www.medsystem.com.tr
E-Mail : info@medsystem.com.tr

Serifali Mahallesi, Hattat Sokak
PK 34775 No: 21 Medsystem İş Merkezi
Dudullu — Ümraniye
İSTANBUL / TÜRKİYE

Phone : +90 216 415 56 60 (pbx)
Fax : +90 216 415 32 24

www.medsystem.com.tr

MedSystem reserves the right to make changes without notice in design, specifications and models. The only warranty MedSystem makes is the Express written warranty extended on the sale or rental of its products.

© 2019 MedSystem, ALL RIGHTS RESERVED